

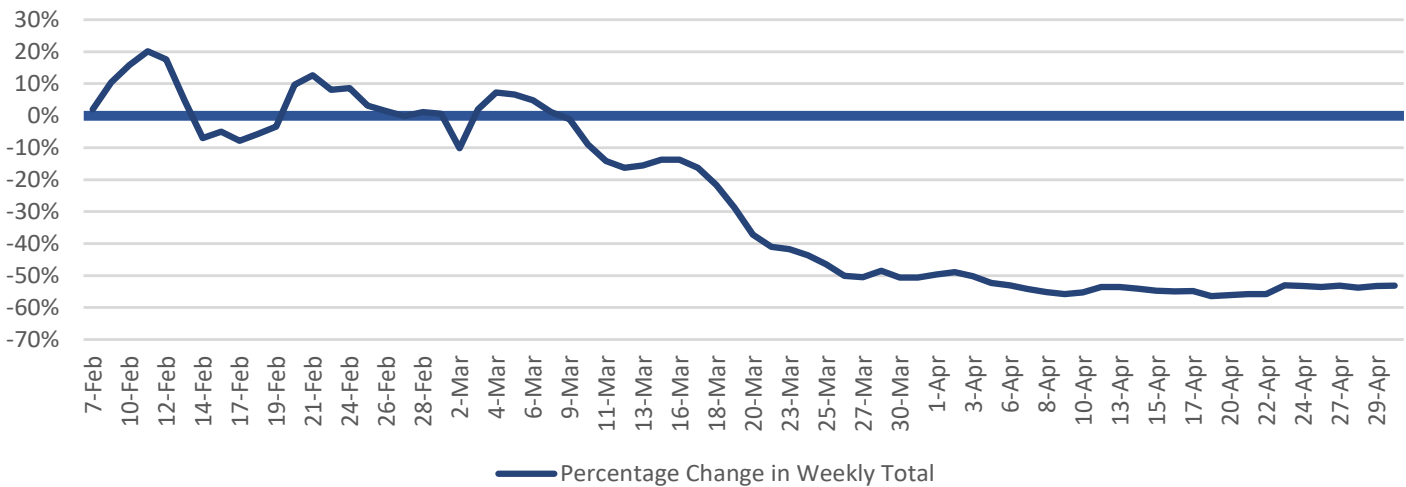
Planning Board Report

May 18, 2020

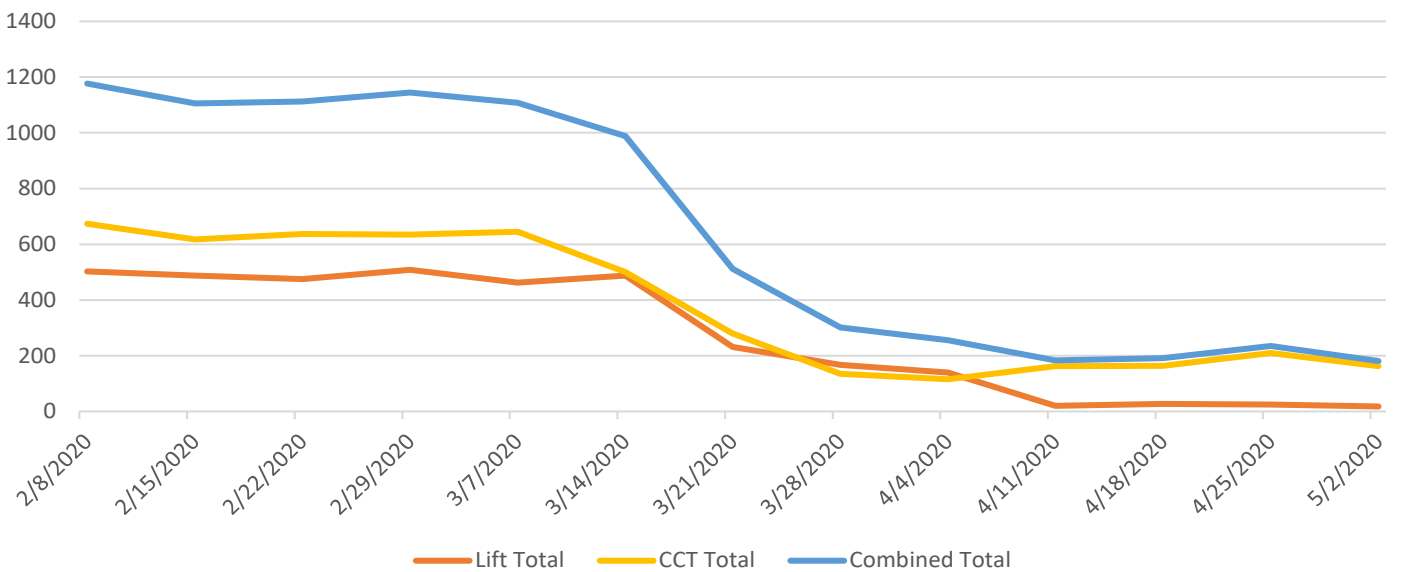
Ridership Table Notes

- Line 19: Total fixed route rides for April were down 52% from 2019. The entire month was fairly consistent with volume being down 49- 56%.
- Line 28: Total paratransit ridership followed a similar, but more severe, downturn than fixed route service, down 77% for the entire month. By the last week of April, weekly ridership was down 85% from the last week in January 2020.
- Capital City Taxi carried 83% of all paratransit trips in April.

Fixed Route Ridership Change 2019 to 2020 (percent)



Lift Trends - Weekly Totals



Topeka Metropolitan Transit Authority

Passengers, Hours and Miles
FY2020

Ridership Table

		Apr 2020	% Change	FY2020 To Date	% Change	Apr 2019	FY2019 To Date	Apr 2018	FY2018 To Date
Passengers									
Fixed Route									
Line #									
1	Adult Cash	0	-100.0%	73,642	-18.7%	8,783	90,602	9,455	112,734
2	24Hr	0	-100.0%	106,105	-11.0%	11,909	119,266	11,109	120,286
3	Annual	0	-100.0%	5,377	-4.8%	549	5,646	680	4,818
4	<i>Full Fare Subtotal</i>	0	-100.0%	185,124	-14.1%	21,241	215,514	21,244	237,838
5	Reduced	0	-100.0%	260,455	-13.1%	34,007	299,591	27,375	278,963
6	24Hr Reduced	2	-100.0%	156,484	0.4%	17,558	155,844	13,268	115,589
7	<i>Reduced Subtotal</i>	2	-100.0%	416,939	-8.5%	51,565	455,435	40,643	394,552
8	Student	4	-100.0%	117,870	-22.0%	16,196	151,042	15,276	163,062
9	Student 24Hr	0	-100.0%	4,470	-18.3%	920	5,469	644	5,533
10	<i>Student Subtotal</i>	4	-100.0%	122,340	-21.8%	17,116	156,511	15,920	168,595
11	Washburn	2	-100.0%	29,098	-19.3%	4,038	36,071	3,891	45,937
12	City Employees	2	-98.3%	1,063	816.4%	116	116	151	151
13	Flex	39	-54.1%	327	-51.0%	85	667	41	369
14									
15	Promotions	220	35.8%	9,033	-39.2%	162	14,862	201	15,571
16	Freedom Pass	7	-99.1%	7,064	6.9%	750	6,610	770	7,299
17	Other Non-Rev (<i>includes ride-through</i>)	52,228	272.4%	182,528	21.4%	14,024	150,390	17,170	145,327
18	<i>Non-Revenue Subtotal</i>	52,455	251.2%	198,625	15.6%	14,936	171,862	18,141	168,197
19	Total Fixed Route	52,504	-51.8%	953,516	-8.0%	108,981	1,036,060	99,880	1,015,488
Paratransit									
20	TMTA Operated	171	-91.9%	17,662	-6.0%	2,121	18,790	1,933	18,232
21	<i>Ambulatory</i>	3	-98.1%	1,013	-40.1%	155	1,691	256	2,772
22	<i>Wheelchair</i>	134	-92.4%	15,251	-0.5%	1,753	15,332	1,482	13,711
23	<i>PCA</i>	34	-84.0%	1,398	-20.9%	213	1,767	195	1,749
24	Taxi Service	826	-67.7%	23,316	0.0%	2,554	23,319	2,207	20,420
25	<i>Ambulatory</i>	525	-78.0%	20,268	-4.3%	2,389	21,187	2,104	19,411
26	<i>Wheelchair</i>	229	213.7%	1,988	57.5%	73	1,262	0	0
27	<i>PCA</i>	72	-21.7%	1,060	21.8%	92	870	103	1,009
28	Total Paratransit	997	-78.7%	40,978	-2.7%	4,675	42,109	4,140	38,652
Revenue Hours									
29	Fixed Route	5,029	-15.5%	51,821	-10.1%	5,954	57,646	4,931	49,808
30	TMTA Paratransit	91	-90.6%	7,956	-8.5%	965	8,694	858	8,296
31	Taxi Paratransit	162	-77.3%	5,976	-6.1%	712	6,367	594	5,317
32	Total Revenue Hours	5,282	-30.8%	65,754	-9.6%	7,632	72,707	6,383	63,421
Revenue Miles									
33	Fixed Route	73,097	-6.0%	735,692	-4.9%	77,778	773,577	73,427	743,584
34	TMTA Paratransit	1,207	-90.7%	111,021	-3.3%	12,931	114,813	11,357	109,116
35	Taxi Paratransit	2,854	-73.5%	95,493	-2.1%	10,770	97,505	9,288	85,576
36	Total Revenue Miles	77,158	-24.0%	942,206	-4.4%	101,479	985,895	94,072	938,276